

There is usually a feeling of confusion associated with measuring yourself to ensure you order the correct uniform. This should not be the case.

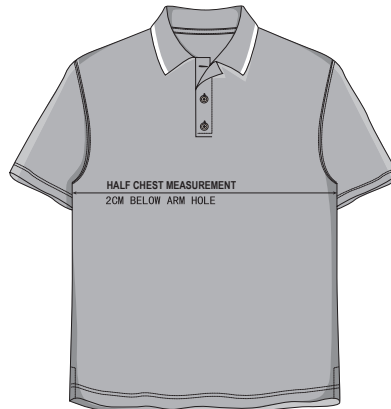
By following a few simple steps, you can easily order your correct sizing.

1. Use a soft fabric measuring tape –like the tailors use. This is the best option for ensuring a correct measurement. **DO NOT** use a builders' tape measure or hard ruler!
2. Use a piece of uniform you currently wear for measuring. Ensure you are measuring like for like – ie business shirt for business shirt, polo for polo etc.
3. Lay your garment on a flat hard surface – a clean table is best.
4. Smooth out the garment to be as flat as possible – avoid wrinkles.
5. Now measure your garment:
  - a. Chest - measure 2cm down from the armhole & then measure left to right at that point for a half chest measurement.
  - b. Waist - for pants & skirts, measure across the top of the garment – then double it.

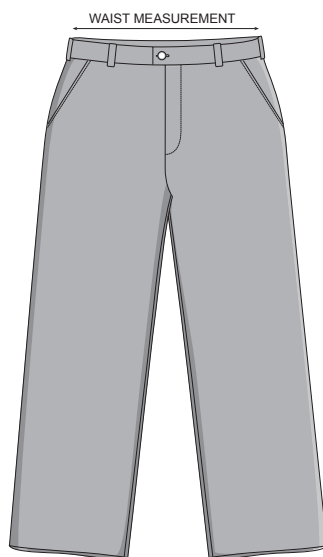
**HANDY HINT** – If you find your measurement is between sizes – order the larger size to ensure a good fit.



JACKET



POLO



PANTS



SHIRT

Please note that specification measurements relate to garment dimensions not body measurements